

Xtra-Sense Model PIC4 Painting Alarm



The Model PIC 4 Painting Alarm is a fully portable, battery powered security detector for wall hung objects. It can simply be supported from the same hook or hanging system as the object, and requires little or no setting up. It offers the facility to provide an alarm signal, both at the painting, and at a remote location.

There is no requirement to attach the unit to the painting, making it ideal where items are either changed or moved regularly. It is also well suited to protecting works of art where fixing an alarm unit to the artwork could result in an unacceptable degree of damage.

It also has an exceptionally high immunity to false alarms caused by knocks, vibration and wind movement.

Applications include museums, art galleries, corporate art collections and private residences.

The unit is 155mm long, 125mm wide, and 15mm deep, and is supplied in a black plastic casing.

Key Benefits

- Painting alarm detector is not fixed to the painting
- Unit can provide a wireless link to a remote alarm, plus a local warning at the painting
- Detector has an excellent immunity to false alarms caused by knocks, vibration and wind movement
- System can be highly portable and easy to set up for temporary use

Painting Alarm Detector

The painting alarm detector is a fully portable, battery powered device, which can simply be hung behind the painting in a similar way to the **PIC1** model.

Units operate by monitoring changes in the pressure between the painting and the supporting wall, down to approximately 15g or 0.5oz. Removal of the painting will release the pressure, and activate the alarm. The unit will also detect increases in pressure between the painting and wall that may be caused by vandalism of the art.

The **PIC4** was designed for alarming paintings located in normal working or living environments, such as offices and private residences, where the paintings can easily be knocked or moved accidentally. The design, therefore incorporates a very high level of immunity to knocks, vibration and wind movement to avoid false alarms.

On detecting an alarm condition, the unit will emit a low intensity audible alarm (75dB @ 30cm) as a local warning. The **PIC4** is also fitted with the facility to trigger third party radio transmitters to provide a wireless link into other security systems.

Linking the PIC4 Detector into a Security System

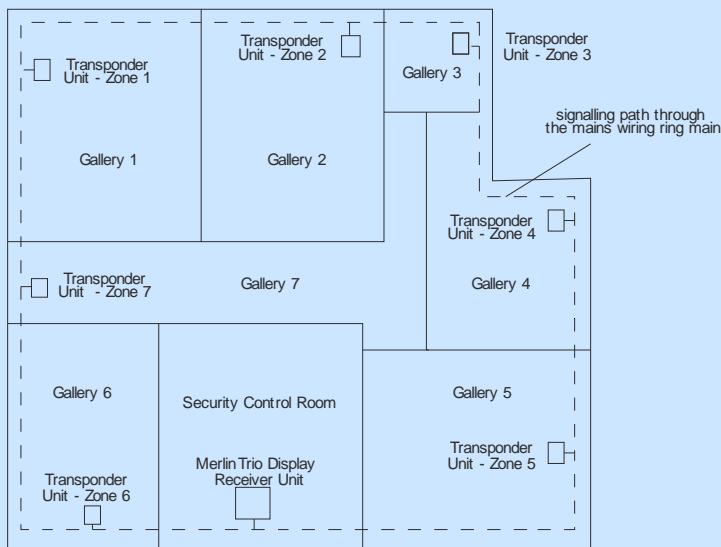
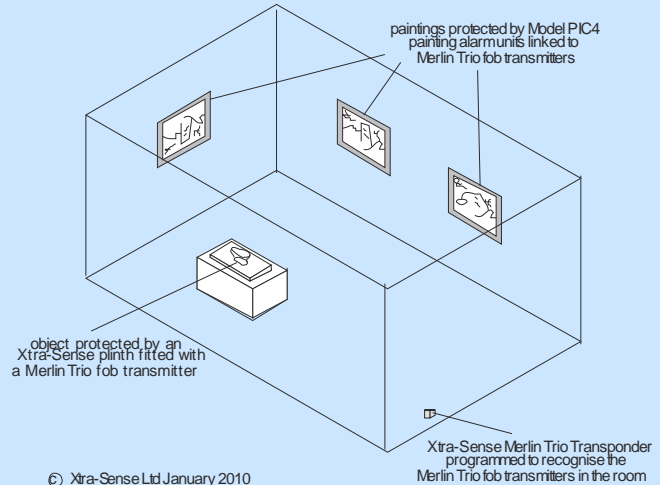
The PIC4 Detector can be linked wirelessly into a third party security system by using the unit to trigger a suitable radio transmitter unit, which can be located behind the painting. The PIC4 unit links to the transmitter by simple two core wiring and offers the electronic equivalent of either a normally closed or normally open pair of contacts to activate the transmitter.

Linking to the Xtra-Sense Merlin Trio Mains Signalling Systems

Linking the PIC4 Detector to the Xtra-Sense **Merlin Trio** mains signalling product provides a security system that is simple to install and can be easily modified and moved.

The **Merlin Mains Signalling** products provide systems for sending alarm signals through the existing mains-power wiring within buildings to enable alarms to be routed to a remote location without the need for additional wiring. For more details, see the leaflets on the **Merlin Mains Signalling Systems**.

When wired to a **Merlin Trio** fob transmitter, the **PIC4** can interface into the **Merlin Trio** signalling product to create a mobile and flexible multi-zone security system.



Plan Layout for a Building Using Seven Xtra-Sense Merlin Trio Transponder Units and a Merlin Trio Receiver Unit for Alarming Seven Galleries

© Xtra-Sense Ltd 2010

Typically, all **PIC4** units within a room or zone will be set to trigger a single **Merlin Trio** Transponder located either within, or close to, the relevant room or zone.

The **Merlin** Transponder forwards the signal into the mains power wiring of the building, identifying the room or zone where the alarm was activated and the painting that initiated the trigger.

This signal is detected by the **Merlin Trio** Display Receiver located at a Control Room or Reception area elsewhere in the building, and the numbers of both the room / zone and painting are displayed.

Please contact us for more details on the options available.

Battery Life

With no activations, battery life is approx. 2 years, and a small number of daily activations of short duration will not reduce the battery life significantly. A low battery warning is provided by the onboard sounder.

